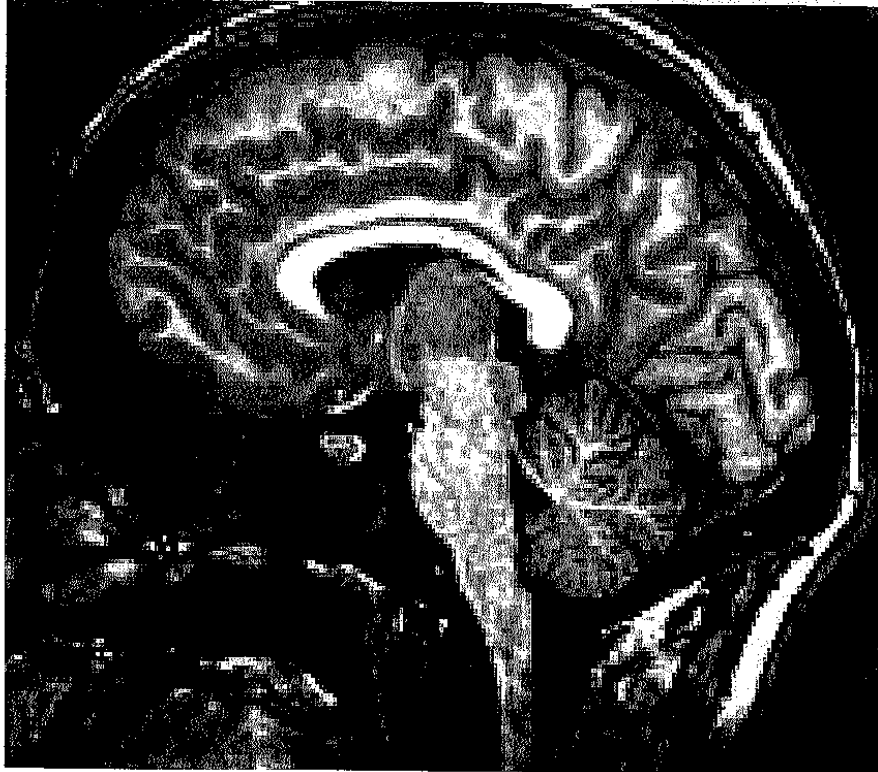


Are you 65 years of age or older? Ever wonder what your brain looks like?



IRB
APPROVED
ON 3/9/06
TJC

Participants needed for a functional magnetic resonance imaging (fMRI) study looking at language functions in the brain of older adults.

Participation time is approximately 2-3 hours and you will be emailed pictures of your brain.

To participate you must be right-handed and a native English speaker.

You cannot participate if you have claustrophobia, a cardiac pacemaker, or metal implants other than dental work.

Please call (352) 376-1611 ext. 5395 if interested.

fMRI Study	fMRI Study	fMRI Study	fMRI Study	fMRI Study
(352) 376-1611	(352) 376-1611	(352) 376-1611	(352) 376-1611	(352) 376-1611
Ext. 5395	Ext. 5395	Ext. 5395	Ext. 5395	Ext. 5395